

2022



J. HARVEST & FROST
CORPORATE SHIRTMAKER





J.HARVEST & FROST

Our mission is to bring passion and aesthetics to your workday. J.Harvest & Frost is built on the belief that aesthetics, quality design and precision craftsmanship play fundamental parts in our lives. In other words – we believe in order to thrive and find our passion while we work - we need to surround ourselves with things which inspire and encourage us.

WE ARE SHIRTMAKERS

We are a work shirt brand for men and women - and in order to succeed in our mission, and become “fuel for your passion”, we offer well-made, detailed and affordable work shirts of the highest quality. We aim to be that undefinable, yet powerful, intangible asset which aesthetics represents in your workday. J.Harvest & Frost was established in 2014 as a result of a collaboration between two brands – James Harvest Sportswear, rooted in U.S. college fashion with worldwide distribution and Frost, with its focus on tailored, well-cut garments in a small scale. Two excellent concepts brought together in one brand.

We started on a journey to develop our lines of high quality work shirts for men and women.

To be there with you – everyday - at the workshop, the office or at the pub – we set out to develop a collection of shirts which would meet the needs of those occasion. Quality, roughness, durability became our lodestars.

We found inspiration in early 20th century fashion, as well as books, movies, brands and classic designers. We were determined to create something unique – but still at affordable prices. We wanted to make each garment something we would’ve loved to wear ourselves.

NEVER DONE

Still, people’s expectations and needs changes, so we realize, with delight, that our pursuit for that perfect work shirt will be never-ending and we’ll continue our journey and search for the best fit, materials, details, stitches and techniques.

Making these products demands a holistic view on design, and we recognize that aesthetics are more than visual beauty. We live by the rule that quality design is the sum of three inseparable variables; excellent craftsmanship, the best materials and integrity.

So, while we’re on our quest to give you that little bit of extra beauty in you workday – rest assured – we have got your back. Work hard – and put all your energy into your own dreams. We’ll make sure you’re always dressed for the occasion.



THE J.HARVEST & FROST CONCEPT DIVISIONS



Black Bow – our top of the line collection business shirt. Full featured, classic shirts with state of the art anti-spill Nano treatment, prepressed sleeve, never iron treatment, taped seams, split yoke. 100 % premium long staple compact cotton.



Green Bow – our classic business shirt collection. Here you find our single color products. Timeless classics that will never go out of style. Non Iron, Taped Seams, Split Yoke. 100 % premium long staple compact cotton.



Red Bow – the classic collection with a twist. Our well-worked shirts with contrast details to suit different situations. Works fine as a business shirt and for more casual occasions. Non Iron, Taped Seams, Split Yoke. Most are made from 100 % premium long staple compact cotton.



Purple Bow – our trend collection. This collection is always changing to meet the needs for fashion today and tomorrow. Non Iron, Taped Seams, Split Yoke.



Indigo Bow – the indigo bow line is all about casual style. Knitted shirts, jeans shirts, linen shirts. They are all 3 cm shorter than our business models. Enjoy our Tribute to Leisure.



Yellow Bow – our price & eco conscious shirt collection. Plenty of bang for your bucks. These shirts are made from various materials; lyocell, long staple Compact Cotton, organic cotton, recycled polyester, recycled polyamide and recycled Elastan.

Making the finer wear work

- From the office to the dinner party

BLACK BOW

THE ULTIMATE IRON FREE SHIRT WITH REVOLUTIONARY SPILL PROTECTION, AND PROBABLY THE LAST GREAT SHIRT YOU'LL EVER NEED. SAY GOODBYE TO IRONING, UNTIMELY COFFEE SPILLS AND BUSINESS LUNCH STAINS. THANKS TO ADVANCED NANOTEX TECHNOLOGY, THE BLACK BOW HAS YOUR BACK. BLACK BOW IS SET OUT TO BE THE WORLD'S BEST WORKING SHIRT. YOUR NOW ABLE TO TEST IT IN ITS NATURAL ENVIRONMENT - YOUR LIFE.

SPLIT YOKE

The construction of the yoke involves splitting the yoke, rotating the parts in the correct angle and sewing them back together. This allows the fabric a bit more stretch which gives you improved freedom of movement and a better fit. We also added mechanical stretch in the material to make it comfortable to look this sharp.

SOFT MODERN CUT AWAY COLLAR WITH HIDDEN BUTTON DOWN

No more of anti-gravity collar. These collartips stays put with the Hidden Button Down feature.

ELASTIC COLLAR BUTTON

In the strive to make the worlds best working shirt, Tor Bjarne made a pledge to himself. Before retiring he would make a patented solution to the problem many (including himself) has. Closing the top button in the collar, is for some very uncomfortable or even impossible. This should be possible to amend.

We have taken the first step in that direction. The top collar button is fastened with elastic tread instead of the traditional one. This makes room for extra movement and is more comfortable to wear. A small, but important, step towards our big aim at making the finer wear work.

NEVER IRON

Everybody knows about Non Iron. Sometimes it's true and sometimes, not so much. We already have Non-Iron on most of our shirts, and we are confident that you have tried it and found it to be one of the ones that works. We were not content. There is still some room for improvement, said Tor Bjarne... Which of course there was. Enter; Never Iron. Life is bigger than creases.

A Never Iron shirt stays crisp through out the day, due to the taped seams and the wrinkle resist treatment. The activator for the Never Iron function is however moisture. So it needs to get damp or wet to straiten out the small amount of creases accumulated during the use of the shirt.

NANO TECHNOLOGY

Beside our regular acclaimed style and finish, we went further into the construction of the fabric. We went far into the fabric. We enhanced the fibres on a molecular level, maintaining the feel and look of the cotton, but made it more resistant towards liquids and oils. Both from the outside and the inside. So if you spill, or get a nervous sweat attack, minutes before your big meeting, you still look like a million bucks. Brush it of and nail that presentation.







SOFT MODERN CUT AWAY
HIDDEN BUTTON DOWN

ELASTIC TOP BUTTON THREAD

NANO TECHNOLOGY
WATER, OIL AND STAIN REPELLENT

MECHANICAL STRETCH

SOLID COLORS

100% LONG STAPLE 2-PLY COMPACT
COTTON, 131 G/M²

SPLIT BACK YOKE

NEVER IRON+
TAPED MAIN-SEAMS (NO WRINKLES)

CLASSIC, PEARLWHITE
2,5 MM-THICK BUTTONS

ROUND EDGE CUFF,
W. CUFFLINK HOLE

FLAT FRONT PLACKET

CURVED HEM

WRINKLE RESIST
6/6

STRETCH
2/6

WEIGHT
131 G/M²

NEVER-IRON

MECHANICAL STRETCH

WATER, OIL AND STAIN
REPELLENT

BLACK BOW 60



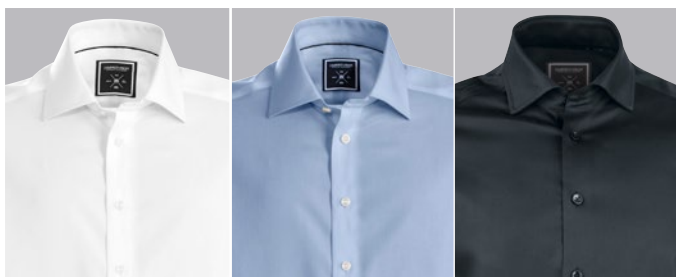
NANO TECH ANTI-SPILL

BLACK BOW 60 REGULAR 2906001 ♂
BLACK BOW 60 SLIM 2906002 ♂
BLACK BOW 60 WOMAN 2906003 ♀

S-5XL
XS-XXL
XS-4XL

The ultimate iron free shirt with revolutionary spill protection, and probably the last great shirt you'll ever need. Say goodbye to ironing, untimely coffee spills and business lunch stains. Thanks to advanced nanotex technology, the Black Bow has your back. Black Bow is set out to be the world's best working shirt.

1149 KR



100 WHITE

500 SKYBLUE

900 BLACK



REGULAR



SLIM



WOMAN







SEMI CUT-AWAY COLLAR

NON-IRON PATENTED ENVIRONMENTAL
TREATMENT

SOLID COLORS

100% LONG STAPLE 2-PLY COMPACT COTTON,
124 G/M²

SPLIT BACK YOKE

TAPED MAIN-SEAMS (NO WRINKLES)

TALL, 4 MM-THICK BUTTONS

SINGLE ANGLE CUFF,
W. CUFFLINK HOLE

RAISED PLACKET

CURVED HEM

WRINKLE RESIST
6/6STRETCH
0/6WEIGHT
124 G/M²

NON-IRON

LONGLASTING WHITE



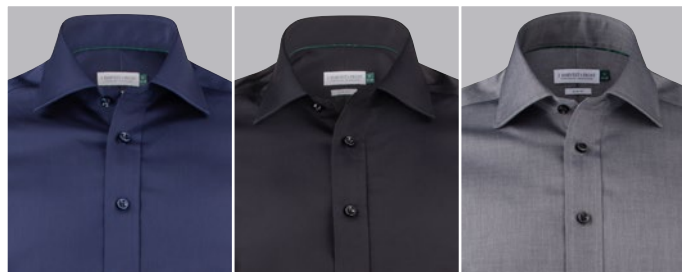
GREEN BOW 01



100 WHITE

500 SKY BLUE

560 MIDBLUE



600 NAVY

900 BLACK

911 GREY

GREEN BOW 01 REGULAR 2900101 ♂
 GREEN BOW 01 SLIM 2900102 ♂
 GREEN BOW 01 WOMAN 2900103 ♀
 GREEN BOW 01 WOMAN RELAXED 2900104 ♀

S-5XL
 XS-XXL
 XS-4XL
 XS-4XL

Nothing beats the clean look of a solid dress shirt.

But even at a solid color there are still some features that make our shirt stand out from the crowd. The shirt is crafted in our favorite high performance twill texture. This gives the perfect sheen to it, results in a substantial good hand feeling and makes it less transparent than similar white dress shirts.

A split yoke in back, medium cut-away collar and a 35 mm. raised placket set the edge for this sharp, but classic shirt.

829 KR



REGULAR

SLIM

WOMAN

WOMAN RELAXED
(WHITE & SKY BLUE)



SEMI CUT-AWAY COLLAR

NON-IRON PATENTED ENVIRONMENTAL
TREATMENT

SOLID COLORS WITH CONTRASTS

100% LONG STAPLE 2-PLY COMPACT COTTON,
124 G/M²

SPLIT BACK YOKE

TAPED MAIN-SEAMS (NO WRINKLES)

TALL, 4 MM-THICK BUTTONS

SINGLE ANGLE CUFF,
W. CUFFLINK HOLE

FLAT FRONT PLACKET

CURVED HEM


 WRINKLE RESIST
6/6

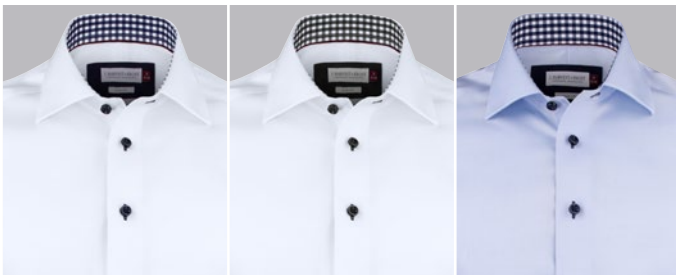

 STRETCH
0/6


 WEIGHT
124 G/M²

 NON-IRON


 LONGLASTING WHITE


RED BOW 20



1066 WHITE/NAVY

109 WHITE/BLACK

5066 SKY BLUE/NAVY



605 NAVY/SKY BLUE

904 BLACK/RED



RED BOW 20 REGULAR 2902001 ♂
RED BOW 20 SLIM 2902002 ♂
RED BOW 20 WOMAN 2902003 ♀

S-4XL
XS-XXL
XS-4XL

Through the Red bow line we reinvent the classic shirt. By adding sophisticated colors and details we made it more modern and smart, but still kept it a classy business shirt. The shirt is crafted in our favorite high performance twill texture. This gives the perfect sheen to it, results in a substantial good hand feeling and makes it less transparent than similar dress shirts.

929 KR



REGULAR



SLIM



WOMAN

WRINKLE RESIST
6/6

STRETCH
0/6

WEIGHT
125 G/M²



NON-IRON



SEMI CUT-AWAY COLLAR

STRIPED POPLIN WEAVE

100% LONG STAPLE 2-PLY COMPACT COTTON,
125 G/M²

SPLIT BACK YOKE

TAPED MAIN-SEAMS (NO WRINKLES)

TALL, 4 MM-THICK BUTTONS

SINGLE ANGLE CUFF,
W. CUFFLINK HOLE

FLAT FRONT PLACKET

CURVED HEM

RED BOW 24

RED BOW 24 REGULAR 2902401 ♂
RED BOW 24 SLIM 2902402 ♂
RED BOW 24 WOMAN 2902403 ♀

S-4XL
XS-XXL
XS-4XL

White thin stripes on a blue or grey anthracite base, makes it a stylish new version of the classic striped shirt. The shirt can perfectly match with all colors and patterns, and is an excellent choice if you should add some colors to your standard white & blue wardrobe. The shirt is crafted in our favorite fine-twill fabric, for perfect performance.

We added modern contrast details together with standard features like semi cut away collar, flat front, angle cuff and a split yoke in the back. The shirt is well-designed to take you from the office to the dinner party in one day.

929 KR

REGULAR



SLIM



WOMAN



551 MIDBLUE STRIPE



951 GREY STRIPE



SEMI CUT-AWAY COLLAR

NON-IRON

SOLID COLORS WITH MODERATE CONTRASTS.

100% LONG STAPLE MICRO-CORD
BEDFORD STRUCTURE, 130 G/M²

SPLIT BACK YOKE

TAPED MAIN-SEAMS (NO WRINKLES)

TALL, 4 MM-THICK BUTTONS

SINGLE ANGLE CUFF,
W. CUFFLINK HOLE

FLAT FRONT PLACKET

CURVED HEM


 WRINKLE RESIST
6/6


 STRETCH
2/6


 WEIGHT
130 G/M²

 NON-IRON


 LONGLASTING WHITE


RED BOW 29



100 WHITE



500 SKY BLUE



RED BOW 29 REGULAR 2902901 ♂
 RED BOW 29 SLIM 2902902 ♂
 RED BOW 29 WOMAN 2902903 ♀

S-4XL
 XS-XXL
 XS-4XL

The Bedford micro-cord structure in solid color gives the shirt class, and are well recommended for either business or a bit less formal occasions. The fabric is well known for us, and is aiming to be one of our top 3 classics. We also use this magnificent material in our Purple Bow 146 shirt. The typical Redbow line-shirt. Classic, yet detailed, giving the shirt a modern sophisticated look.

929 KR

REGULAR



SLIM



WOMAN





SEMI CUT-AWAY COLLAR

NON-IRON

INDIGO COLOR

100% LONG STAPLE 2-PLY COMPACT COTTON,
Twill Weave 124 G/M²

SPLIT BACK YOKE

TAPED MAIN-SEAMS (NO WRINKLES)

TALL, 4 MM-THICK BUTTONS

SINGLE ANGLE CUFF,
W. CUFFLINK HOLE

FLAT FRONT PLACKET

CURVED HEM

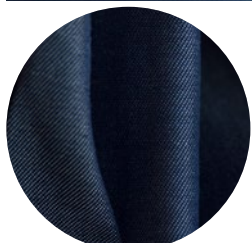

 WRINKLE RESIST
6/6


 STRETCH
0/6


 WEIGHT
124 G/M²

 NON-IRON


RED BOW 120



550 INDIGO

RED BOW 120 REGULAR 2912001 ♂
 RED BOW 120 SLIM 2912002 ♂
 RED BOW 120 WOMAN 2912003 ♀

S-4XL
 XS-XXL
 XS-4XL

The perfect shirt for any occasion. With the characteristic indigo color, our famous non-iron fine twill fabric can remind you of a smart "jeans shirt". It is set up with a tone in tone paisley contrast pattern in collar & cuff, and white details in placket & button tread. The typical Redbow line-shirt. Classical, yet detailed, giving the shirt a modern sophisticated look.

929 KR

REGULAR



SLIM



WOMAN





BUTTON DOWN COLLAR

OXFORD WEAVE

95% LONG STAPLE 2-PLY COMPACT COTTON,
5% ELESTANE, 149 G/M²

SPLIT BACK YOKE

NON-IRON

TAPED MAIN-SEAMS (NO WRINKLES)

TALL, 4 MM-THICK BUTTONS

ROUND EDGE-CUFF,
W. CUFFLINK HOLE

PASSPOILED POCKETS (MEN'S)

FLAT FRONT PLACKET

CURVED HEM



 WRINKLE RESIST
5/6


 STRETCH
4/6


 WEIGHT
149 G/M²

 NON-IRON


 LONGLASTING WHITE


 STRETCH

RED BOW 121



100 WHITE



500 SKYBLUE



RED BOW 121 REGULAR 2912101 ♂
 RED BOW 121 SLIM 2912102 ♂
 RED BOW 121 WOMAN 2912103 ♀

S-4XL
 XS-XXL
 XS-4XL

We might be one of very few brands that, at the present, can handle the combination NON IRON & STRETCH. It's a tricky combination, you see, which requires quite a lot of thinking, testing and developing to get all this performance into one single shirt. Luckily, we do enjoy the hard-work & developing.

RB121 comes with stylish details, such as a passepoiled chest pocket and matching contrast colors at the right spots.

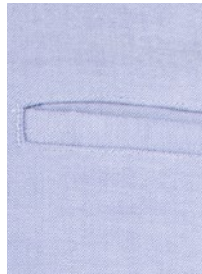
929 KR



561 BLUE



600 NAVY



REGULAR

SLIM

WOMAN





SOFT MODERN CUT AWAY
HIDDEN BUTTON DOWN

NON-IRON

SOLID COLORS.

100% LONG STAPLE 2-PLY COMPACT COTTON,
Twill Weave. 124 G/M²

SPLIT BACK YOKE

TAPED MAIN-SEAMS (NO WRINKLES)

TALL, 4 MM-THICK BUTTONS

SINGLE ANGLE CUFF,
W. CUFFLINK HOLE

FLAT FRONT PLACKET

CURVED HEM



WRINKLE RESIST
6/6

STRETCH
0/6

WEIGHT
124 G/M²

NON-IRON

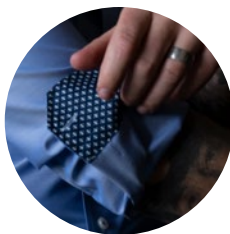
LONGLASTING WHITE

RED BOW 122



100 WHITE

500 SKY BLUE



RED BOW 122 REGULAR 2912201 ♂
RED BOW 122 SLIM 2912202 ♂
RED BOW 122 WOMAN 2912203 ♀

S-4XL
XS-XXL
XS-4XL

J. Harvest & Frost has been around a while by now. Many of our continuing shirts have had the time to turn into real classics. Time to gently renew one of our most popular models. Red Bow 122 is a new expression of Red Bow 20. Infallible model with new, modern details and the additional new hidden button-down collar which we love so much. We are ready for a new decade.

929 KR



560 MID BLUE

911 GREY



REGULAR

SLIM

WOMAN





SOFT MODERN CUT AWAY
HIDDEN BUTTON DOWN

NON-IRON

INNOVATIVE MECHANICAL STRETCH

BLUE TONED JAQUARD FABRIC, WOVEN IN
A FINE MICRO-PATTERN

100% LONG STAPLED 2-PLY COMPACT
COTTON. 130 G/M²

SPLIT BACK YOKE

TAPED MAIN-SEAMS (NO WRINKLES)

CLASSIC, PEARLWHITE 2,5 MM-THICK
BUTTONS

SOFT ROUND EDGE CUFF,
W. CUFFLINK HOLE

FLAT FRONT PLACKET
CURVED HEM

WRINKLE RESIST
5/6

STRETCH
2/6

WEIGHT
130 G/M²

NON-IRON

MECHANICAL STRETCH



PURPLE BOW 48



566 BLUE PATTERN



PURPLE BOW 48 REGULAR 2904801 ♂
PURPLE BOW 48 SLIM 2904802 ♂
PURPLE BOW 48 WOMAN 2904803 ♀

S-4XL
XS-XXL
XS-4XL

Blue/white patterned shirt. A double 100's jacquard fabric, with a nice modern micro-pattern. Combine it with the full suit or a more relaxed look together with jeans, either way it will serve you good.

Our newly developed fabric is made with a mechanical stretch for better comfort. The mechanical stretch is a new innovative way of giving comfort to a 100% natural long stapled, compact cotton fabric. It will give natural elasticity to the shirt of up to 12% stretch the weft way, and still keep our great NON-IRON performance. This is innovative shirt-making at its best, and we enjoy taking part of it.

1029 KR

REGULAR



SLIM



WOMAN





SOFT MODERN CUT AWAY
HIDDEN BUTTON DOWN

INNOVATIVE MECHANICAL STRETCH

NAVY JACQUARD FABRIC , WOVEN WITH
WHITE MICRO DOTS

100% LONG STAPLED 2-PLY COMPACT
COTTON, 130 G/M²

SPLIT BACK YOKE

TAPED MAIN-SEAMS (NO WRINKLES)

CLASSIC, PEARLWHITE
2,5 MM-THICK BUTTONS

SOFT ROUND EDGE CUFF,
W. CUFFLINK HOLE

FLAT FRONT PLACKET

CURVED HEM

WRINKLE RESIST
5/6

STRETCH
2/6

WEIGHT
130 G/M²

NON-IRON

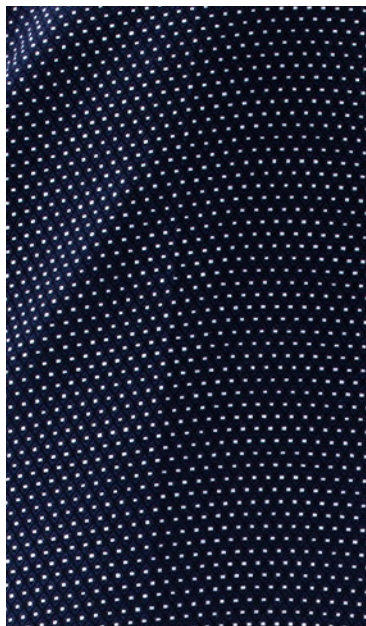
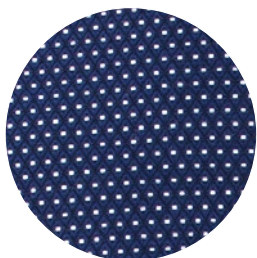
MECHANICAL STRETCH



PURPLE BOW 49



601 NAVY/WHITE DOT



PURPLE BOW 49 REGULAR 2904901 ♂
PURPLE BOW 49 SLIM 2904902 ♂
PURPLE BOW 49 WOMAN 2904903 ♀

S-4XL
S-XXL
XS-4XL

A double 100's jacquard fabric, woven with white dots on navy background for a modern and sophisticated look. Combine it with the full suit or together with jeans, either way it will serve you good.

Our newly developed fabric is made with a mechanical stretch for better comfort.

The mechanical stretch is a new innovative way of giving comfort to a 100% natural long stapled, compact cotton fabric. It will give natural elasticity to the shirt of up to 12% stretch the weft way, and still keep our great NON-IRON performance.

This is innovative shirt-making at its best, and we enjoy taking part of it.

1029 KR

REGULAR



SLIM



WOMAN



WRINKLE RESIST
5/6

STRETCH
5/6

WEIGHT
125 G/M²

NON-IRON

360° STRETCH



SOFT MODERN CUT AWAY
HIDDEN BUTTON DOWN

360° STRETCH

NON-IRON

MINI-CHECKS PATTERN

90% LONG STAPLE 2-PLY COMPACT
COTTON, 10% ELASTANE,
POPLIN WEAVE, 125 G/M²

SPLIT BACK YOKE

TAPED MAIN-SEAMS (NO WRINKLES)

CLASSIC, NAVY 2,5 MM-THICK BUTTONS

ROUND EDGE CUFF,
W. CUFFLINK HOLE

FLAT FRONT PLACKET

CURVED HEM

PURPLE BOW 141

PURPLE BOW 141 REGULAR 2914101 ♂
PURPLE BOW 141 SLIM 2914102 ♂
PURPLE BOW 141 WOMAN 2914103 ♀

S-4XL
XS-XXL
XS-4XL

4-way stretch fabric with NON IRON treatment is another new and innovative performance made by us. With a 360 degree stretch ability, the shirt is as comfortable as a woven dress-shirt can get. It works with you in your every movement. The shirt is crafted in light-weight soft hand-touched poplin. With versatile Mini-checks, this shirt suits all looks from the office to the less formal occasions.

1029 KR

REGULAR



SLIM



WOMAN



313 ORANGE CHECK



515 BLUE CHECK



616 NAVY CHECK

SOFT MODERN CUT AWAY
HIDDEN BUTTON DOWN

NON-IRON

FREEFIT STRETCH

2 TONE COLOR OXFORD WEAVE

96% LONG STAPLE 2-PLY COMPACT
COTTON, 4% FREE FIT STRETCH, 145 G/M²

SPLIT BACK YOKE

TAPED MAIN-SEAMS (NO WRINKLES)

TALL, 4 MM-THICK BUTTONS

ROUND EDGE CUFF,
W. CUFFLINK HOLE

FLAT FRONT PLACKET

CURVED HEM

WRINKLE RESIST
5/6

STRETCH
3/6

WEIGHT
145 G/M²

NON-IRON

FREEFIT STRETCH



PURPLE BOW 142



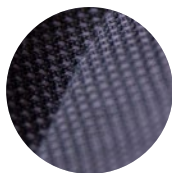
556 BLUE

762 GREEN



864 PURPLE

996 GREY



PURPLE BOW 142 REGULAR 2914201 ♂
PURPLE BOW 142 SLIM 2914202 ♂
PURPLE BOW 142 WOMAN 2914203 ♀

S-4XL
XS-XXL
XS-4XL

Two tone seasonal color of sophisticated oxford fabric with incredible 20% stretch weft way, makes this shirt soft, super comfortable & yet a Non-Iron shirt. Maybe our best take on smart-casual yet. Our guess is this model will quickly become one of your wardrobe essentials.

1029 KR

REGULAR



SLIM



WOMAN





WRINKLE RESIST
5/6



STRETCH
2/6



WEIGHT
122 G/M²



NON-IRON



MECHANICAL STRETCH



SOFT MODERN CUT AWAY
HIDDEN BUTTON DOWN

MECHANICAL STRETCH

TWO TONE INDIGO COLOR PAISLEY

100% LONG STAPLE COMPACT COTTON,
FINE TWILL, 122 G/M²

SPLIT BACK YOKE

TAPED MAIN-SEAMS (NO WRINKLES)

TALL, 4 MM-THICK BUTTONS

SOFT ROUND EDGE CUFF,
W. CUFFLINK HOLE

FLAT FRONT PLACKET

CURVED HEM

PURPLE BOW 143

PURPLE BOW 143 REGULAR 2914301 ♂
PURPLE BOW 143 SLIM 2914302 ♂
PURPLE BOW 143 WOMAN 2914303 ♀

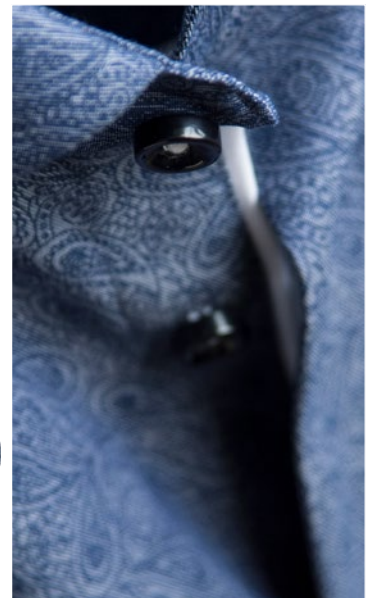
S-4XL
XS-XXL
XS-4XL

A new discrete but bold indigo colored paisley pattern shirt. Dress it up & bold with a tie, or down with your slacks, either way it lets you stay comfortable & sharp all day with our famous Non- iron and natural stretch performance. Innovation and smartness walk hand in hand!

1029 KR



551 INDIGO PAISLEY



REGULAR



SLIM



WOMAN



SOFT MODERN CUT AWAY
HIDDEN BUTTON DOWN

NON IRON

MECHANICAL STRETCH

TWO TONE INDIGO JAQUARD PATTERN

100% LONG STAPLE COTTON 125 G/M²

TAPED MAIN-SEAMS (NO WRINKLES)

SPLIT BACK YOKE

TALL, 4 MM-THICK BUTTONS

SOFT ROUND EDGE CUFF,
W. CUFFLINK HOLE

WRINKLE RESIST
4/6

STRETCH
2/6

WEIGHT
125 G/M²

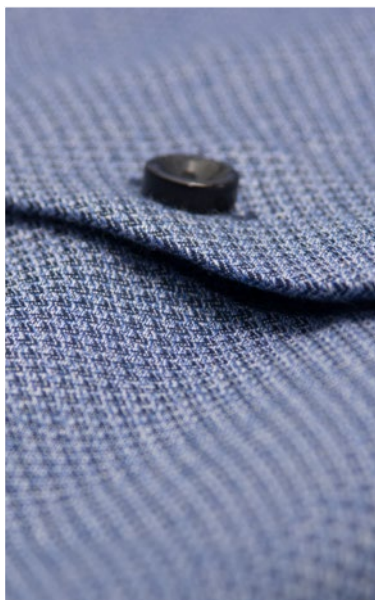
NON-IRON

MECHANICAL STRETCH

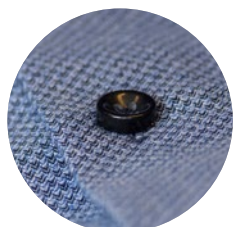
SUPERSOFT



PURPLE BOW 144



556 INDIGO



PURPLE BOW 144 REGULAR 2914401 ♂
PURPLE BOW 144 SLIM 2914402 ♂
PURPLE BOW 144 WOMAN 2914403 ♀

S-4XL
XS-XXL
XS-4XL

A lightweight non-iron dress shirt with brushed surface, that gives a unique, luxurious and super soft hand feeling. The shirt has a soft modern cut-away collar with hidden button-down function. Blue details in collar cuffs and buttoning. Easy to wear. Smart & casual.

1029 KR

REGULAR



SLIM



WOMAN





SOFT EXTREME CUT-AWAY COLLAR
WITH HIDDEN BUTTON DOWN

NON IRON

FREEFIT STRECH

TWO-TONE PINHEAD OXFORD WEAVE

96% LONG STAPLE 2-PLY COMPACT COTTON,
4% FREEFIT STRETCH, 140 G/M²

SPLIT BACK YOKE

TAPED MAIN-SEAMS (NO WRINKLES)

TALL, 4 MM-THICK BUTTONS

SINGLE ANGLE CUFF,
W. CUFFLINK HOLE

FLAT FRONT PLACKET

CURVED HEM

WRINKLE RESIST
5/6

STRETCH
3/6

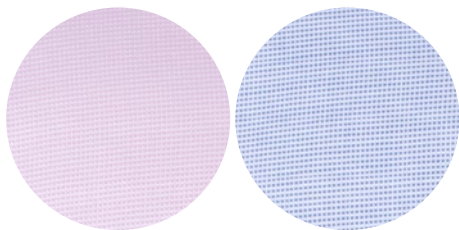
WEIGHT
140 G/M²

NON-IRON

FREEFIT STRETCH



PURPLE BOW 145



PURPLE BOW 145 REGULAR 2914501 ♂
PURPLE BOW 145 SLIM 2914502 ♂
PURPLE BOW 145 WOMAN 2914503 ♀

S-4XL
XS-XXL
XS-4XL

Sharp, colorful & playful is the definition of our PB145.

A two-tone pinhead oxford weave gives the shirt a luxurious structure, the extreme cut-away collar sets the edge, and the modern, colorful contrast details, play's it off.

What you cannot see behind the scenes, is of course where the real magic happens.

PB145 performs with comfortable STRETCH & NON IRON effect, like none other. Purple Bow at it's best.

1029 KR



451 PINK

561 MID BLUE

REGULAR



SLIM



WOMAN





EXTREME CUTAWAY COLLAR

NON-IRON

FINE MICROCORD BEDFORD STRUCTURE

100 % LONG STAPLE COTTON, MICRO-CORD
BEDFORD STRUCTURE. 130 G/M²

SPLIT BACK YOKE

TAPED MAIN-SEAMS (NO WRINKLES)

LUXURIOUS, 4 MM THICK NAVY BUTTONS

SINGLE ANGLE CUFF,
W. CUFFLINK HOLE

FLAT FRONT PLACKET

CURVED HEM


 WRINKLE RESIST
 6/6


 STRETCH
 2/6


 WEIGHT
 130 G/M²

 NON-IRON


 LONGLASTING WHITE

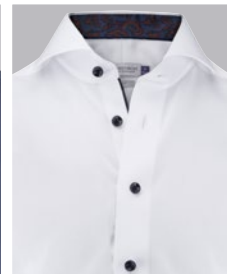

PURPLE BOW 146

PURPLE BOW 146 REGULAR 2914601 ♂
 PURPLE BOW 146 SLIM 2914602 ♂
 PURPLE BOW 146 WOMAN 2914603 ♀

S-4XL
 XS-XXL
 XS-4XL

A new edgy shirt in the same spirit as the old Purple Bow 46. The microcord structure in the fabric, which is the same popular fabric as we use on RB29, makes it stand out compared to our classic twill. The fabric in combination with extreme cut-away collar and a new kick-ass paisley contrast, makes a bold statement. The contrast is obvious on the white, and more discrete on the luxurious navy fabric. Wear it with jeans and a blazer or with a suit and sneakers and you will look impeccable, from the office to the dinner party.

1029 KR



106 WHITE



606 NAVY

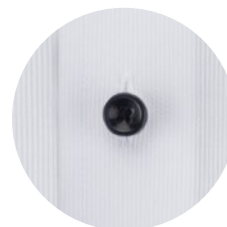
REGULAR



SLIM



WOMAN



WRINKLE RESIST
2/6

STRETCH
0/6

WEIGHT
160 G/M²

GARMENT WASHED

SUPERSOFT

LEISURE STYLE



BUTTON DOWN COLLAR

DURABLE WASH- PEACHED SURFACE

SOLID COLOR OXFORD WEAVE.

100 % COTTON, 160 G/M².

SPLIT BACK YOKE

CHEST POCKET ON MENS STYLE

NATURAL WHITE BUTTONS

EDGE BARREL CUFF,
W. CUFFLINK HOLE

RAISED PLACKET

CURVED HEM

INDIGO BOW 30

INDIGO BOW 30 REGULAR 2903001 ♂
INDIGO BOW 30 SLIM 2903002 ♂
INDIGO BOW 30 WOMAN 2903003 ♀

S-4XL
S-XXL
XS-4XL

Our indigo bow oxford shirt is crafted of carefully selected fabric and finishing that gives the right soft and worn feeling. It is a worker-shirt that is already "worked-in".

679 KR



450 PINK



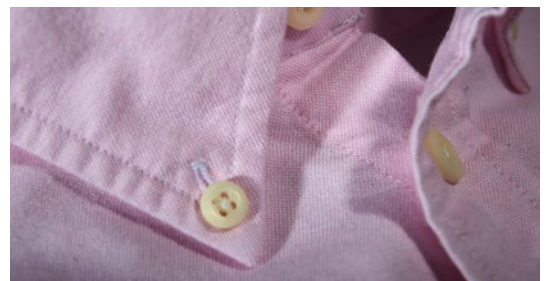
REGULAR



SLIM



WOMAN



LEISURE STYLE MODELS ARE 3 CM SHORTER THAN OUR BUSINESS MODELS

BUTTON DOWN COLLAR

DURABLE WASH- PEACHED SURFACE

CLASSIC STRIPED PATTERN OXFORD WEAVE.

100 % COTTON, 160 G/M².

SPLIT BACK YOKE

CHEST POCKET ON MENS STYLE

NATURAL WHITE BUTTONS

EDGE BARREL CUFF,
W. CUFFLINK HOLE

RAISED PLACKET

CURVED HEM

WRINKLE RESIST
2/6

STRETCH
0/6

WEIGHT
160 G/M²

GARMENT WASHED

SUPERSOFT

LEISURE STYLE

INDIGO BOW 32

INDIGO BOW 32 REGULAR 2903201 ♂

INDIGO BOW 32 SLIM 2903202 ♂

INDIGO BOW 32 WOMAN 2903203 ♀

S-4XL

S-XXL

XS-4XL

Our indigo bow oxford shirt is crafted of carefully selected fabric and finishing that gives the right soft and worn feeling. It is a worker-shirt that is already "worked-in".

679 KR



501 LIGHT BLUE

REGULAR



SLIM



WOMAN



LEISURE STYLE MODELS ARE 3 CM SHORTER THAN OUR BUSINESS MODELS

J. HARVEST & FROST
CORPORATE SHIRTMAKER

M
39/40

SLIM FIT



SMALL CUT-AWAY COLLAR. LIGHTWEIGHT
INTERLINING FOR SOFT TOUCH

SUPERSOFT GARMENT WASH

2 TONE PLAIN WEAVE

100% LINEN, 119 G/M²

SPLIT BACK YOKE

CLASSIC, 2,5 MM-THICK BUTTONS

SOFT ROUND EDGE CUFF,
W. CUFFLINK HOLE

RAISED PLACKET

CURVED HEM

WRINKLE RESIST
1/6

STRETCH
0/6

WEIGHT
119 G/M²

BREATHABLE

GARMENT WASHED

SUPERSOFT

LEISURE STYLE

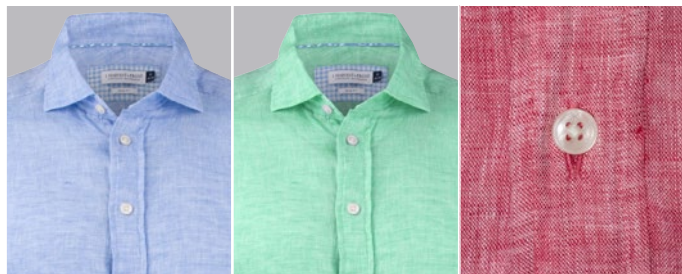
INDIGO BOW 33



100 WHITE

310 ORANGE

410 RED



510 SKYBLUE

710 GREEN

INDIGO BOW 33 REGULAR 2903301 ♂
INDIGO BOW 33 SLIM 2903302 ♂
INDIGO BOW 33 WOMAN 2903303 ♀

S-4XL
XS-XXL
XS-4XL

"Summer in a shirt". Tropical colors, authentic, characteristic wrinkling texture, casual, refined, vacation. All words describing our classical airy open weaved 100% linen shirt. The only shirt that deserves to be wrinkled and looks better this way. The shirt ages with beauty and only improves over time. So grab your gear, and get ready for summer.

979 KR

REGULAR

SLIM

WOMAN



LEISURE STYLE MODELS ARE 3 CM SHORTER THAN OUR BUSINESS MODELS



SOFT MODERN CUT AWAY
HIDDEN BUTTON DOWN

360° STRETCH

SOLID COLORS.

100% LONG STAPLE 2-PLY COMPACT COTTON,
PIQUÉ-KNITTED, 160 G/M²

SPLIT BACK YOKE

SOFT ROUND EDGE PEARLWHITE
BUTTONS, FOR A LUXURIOUS LOOK

SOFT ROUND EDGE CUFF,
W. CUFFLINK HOLE

FLAT FRONT PLACKET

CURVED HEM

WRINKLE RESIST
4/6

STRETCH
6/6

WEIGHT
160 G/M²

KNITTED FABRIC

360° STRETCH

LEISURE STYLE



INDIGO BOW 34



100 WHITE

500 SKYBLUE

INDIGO BOW 34 REGULAR 2903401 ♂
INDIGO BOW 34 SLIM 2903402 ♂
INDIGO BOW 34 WOMAN 2903403 ♀

S-4XL
XS-XXL
XS-4XL

It has the look of a classic woven dress shirt, but indeed it is a knitted shirt.

Combining the best from two worlds, makes this the world's most comfortable good looking dress shirt. It is like wearing a t-shirt, incredible comfort. We make this happen by using high-end double 60 compact yarn, and a soft treatment. This gives the shirt a luxurious out-view and silky touch. Also, when using high quality yarn in a knitted fabric, you get a natural non-iron performance, so you simply wash it, hang dry it and wear it.

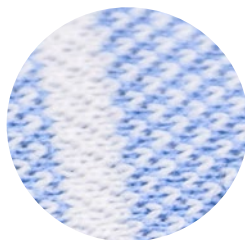
We have strong confident in this new and innovative way of making fine-shirts. And by this we are looking forward to develop more colors and patterns to the knitted program.

Enjoy!

979 KR



550 BLUE-/WHITE STRIPE



REGULAR

SLIM

WOMAN



THESE SHIRTS ARE 3 CM SHORTER THAN OUR REGULAR BUSINESS MODELS



SOFT MODERN CUT AWAY
HIDDEN BUTTON DOWN

EASY CARE

NAVY BACKGROUND WITH
WHITE FLORAL PRINT

100% COMPACT COTTON,
POPLIN WEAVE, 95 G/M²

SPLIT BACK YOKE

TALL, 4 MM-THICK BUTTONS

SOFT ROUND EDGE CUFF,
W. CUFFLINK HOLE

FLAT FRONT PLACKET

CURVED HEM

WRINKLE RESIST
4/6

STRETCH
0/6

WEIGHT
95 G/M²

EASY CARE

LIGHT WEIGHT

LEISURE STYLE

INDIGO BOW 37



601 NAVY FLORAL



INDIGO BOW 37 REGULAR 2903701 ♂
INDIGO BOW 37 SLIM 2903702 ♂
INDIGO BOW 37 WOMAN 2903703 ♀

S-4XL
XS-XXL
XS-4XL

An elegant, bold & modern paisley shirt, printed on a crisp and super light poplin fabric. This stylish shirt has a soft modern cut-away collar with hidden button-down function and Easy-care fabric performance.

979 KR

REGULAR



SLIM



WOMAN



LEISURE STYLE MODELS ARE 3 CM SHORTER THAN OUR BUSINESS MODELS



SOFT MODERN CUT AWAY
HIDDEN BUTTON DOWN

EASY CARE

STRETCH

INDIGO BLUE COLOR
GARMENT WASHED

95% LONG STAPLE COMPACT COTTON
5% ELASTANE, FINE TWILL ,116 G/M²

SPLIT BACK YOKE

TALL, 4 MM-THICK BUTTONS

SOFT ROUND EDGE CUFF,
W. CUFFLINK HOLE

FLAT FRONT PLACKET

CURVED HEM

WRINKLE RESIST
4/6

STRETCH
3/6

WEIGHT
116 G/M²

EASY CARE

SUPERSOFT

GARMENT WASHED

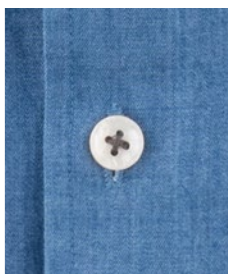
STRETCH

LEISURE STYLE

INDIGO BOW 130



550 INDIGO



INDIGO BOW 130 REGULAR 2913001 ♂
INDIGO BOW 130 SLIM 2913002 ♂
INDIGO BOW 130 WOMAN 2913003 ♀

S-4XL
XS-XXL
XS-4XL

Indigo Bow 130 is a supersoft, light weighted, garment washed jeans shirt, with stretch and Easy Care treatment.

Smart & casual, soft & light, comfortable & easy to care for.
Simply a combination of all good qualities. Enjoy.

979 KR

REGULAR



SLIM



WOMAN



LEISURE STYLE MODELS ARE 3 CM SHORTER THAN OUR BUSINESS MODELS

WRINKLE RESIST
5/6

STRETCH
6/6

WEIGHT
135 G/M²

LIGHT WEIGHT

KNITTED FABRIC

360° STRETCH

LEISURE STYLE



SOFT MODERN CUT AWAY
HIDDEN BUTTON DOWN

360° STRETCH

3 DIFFERENT PRINTS IN
THREE COLORWAYS

100% LONG STAPLE
2-PLY COMPACT COTTON,
PIQUÉ-KNITTED, 135 G/M²

SPLIT BACK YOKE

LUXURIOUS, 4 MM THICK
NAVY BUTTONS

SOFT ROUND EDGE CUFF,
W. CUFFLINK HOLE

FLAT FRONT PLACKET

CURVED HEM

INDIGO BOW 131

INDIGO BOW 131 REGULAR 2913101 ♂

INDIGO BOW 131 SLIM 2913102 ♂

INDIGO BOW 131 WOMAN 2913103 ♀

S-4XL

XS-XXL

XS-4XL

Knitted from the finest long staple compact cotton, for softness and comfyness. This shirt makes you look your best, while feeling like wearing a T-shirt. Combining the best of two worlds, probably the world's most comfortable good looking dress shirt. We make this happen by using high-end double 60 compact yarn, and a soft treatment. This gives the shirt a luxurious look and a smooth, silky touch. Also, when using high quality yarn in a knitted fabric, you get a natural non-iron performance. Simply wash it, hang dry and wear it. Button under collar for the perfect stand. It comes in 3 stylish and modern prints. Enjoy!

979 KR



005 SKY BLUE PRINT



006 NAVY PRINT

REGULAR



SLIM



WOMAN



055 BLUE PRINT





YELLOW BOW 50 REGULAR 2905001 ♂
 YELLOW BOW 50 SLIM 2905002 ♂
 YELLOW BOW 50 WOMAN 2905003 ♀

S-5XL
 XS-XXL
 XS-4XL

Yellow bow 50 is a high performance shirt which is made in our favorite fine blended twill with an added unique Easy Care treatment. As always with taped seams and split yoke.

629 KR



YELLOW BOW 50 S/S REGULAR 2905011 ♂
 YELLOW BOW 50 S/S SLIM 2905022 ♂

S-5XL
 XS-XXL

Yellow bow 50 is a high performance shirt which is made in our favorite fine blended twill with an added unique Easy Care treatment. As always with taped seams and split yoke.

599 KR

SEMI CUT-AWAY COLLAR

EASY CARE

SOLID COLORS.

60% COTTON / 40% POLYESTER, FINE TWILL
FABRIC, 134 G/M²

SPLIT BACK YOKE

TAPED MAIN-SEAMS (NO WRINKLES)

TALL, 4 MM-THICK BUTTONS

SINGLE ANGLE CUFF,
W. CUFFLINK HOLE

RAISED PLACKET

CURVED HEM


 WRINKLE RESIST
4/6


 STRETCH
0/6


 WEIGHT
134 G/M²

 EASY CARE


 WATER ABSORB
+ QUICK DRY


 LONGLASTING WHITE


 DURABLE

YELLOW BOW 50



100 WHITE

500 SKY BLUE

600 NAVY

900 BLACK

955 GREY

REGULAR

SLIM

WOMAN

REGULAR

SLIM





SEMI CUT-AWAY COLLAR

EASY CARE

SOLID COLORS.

60% COTTON / 40% POLYESTER, FINE TWILL
FABRIC, 134 G/M²

SPLIT BACK YOKE

TAPED MAIN-SEAMS (NO WRINKLES)

TALL, 4 MM-THICK BUTTONS

SINGLE ANGLE CUFF,
W. CUFFLINK HOLE

FLAT FRONT PLACKET

CURVED HEM


 WRINKLE RESIST
4/6


 STRETCH
0/6


 WEIGHT
134 G/M²

 EASY CARE


 WATER ABSORB
+ QUICK DRY


 LONGLASTING WHITE


 DURABLE

YELLOW BOW 51



105 WHITE/SKY BLUE

505 SKY BLUE/NAVY

555 ROYAL/NAVY

YELLOW BOW 51 REGULAR 2905101 ♂
 YELLOW BOW 51 SLIM 2905102 ♂
 YELLOW BOW 51 WOMAN 2905103 ♀

S-5XL
 XS-XXL
 XS-4XL

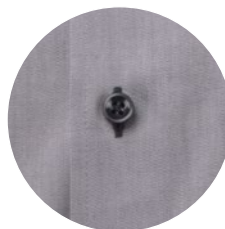
Yellow bow 51 is a high performance shirt which is made in a fine blended twill with an added unique Easy Care treatment and tailored details.
 As always with taped seams and split yoke.

649 KR



905 BLACK

955 GREY/BLACK



REGULAR



SLIM



WOMAN





WRINKLE RESIST
4/6



STRETCH
4/6



WEIGHT
99 G/M²



EASY CARE



WATER ABSORB
+ QUICK DRY



DURABLE




GENTLE ON SKIN



RECYCLED
MATERIALS



LONGLASTING WHITE



STRETCH



SOFT MODERN CUT-AWAY COLLAR WITH
HIDDEN BUTTON DOWN

EASY CARE

STRETCH

SOLID COLOR DOBBY WEAVE

22% LONG STAPLE COMPACT COTTON,
51.5% TENCEL™ LYOCCELL, 22.5% RECYCLED
POLYAMIDE, 4% RECYCLED ELASTANE,
99 G/M²

SPLIT BACK YOKE

TALL, 4 MM-THICK BUTTONS

SOFT ROUND EDGE CUFF,
W. CUFFLINK HOLE

RAISED PLACKET

CURVED HEM

YELLOW BOW 52



100 WHITE



500 SKYBLUE



900 BLACK

YELLOW BOW 52 REGULAR 2905201 ♂

YELLOW BOW 52 SLIM 2905202 ♂

YELLOW BOW 52 WOMAN 2905203 ♀

S-5XL

XS-XXL

XS-4XL

This shirt is taking the price conscious Yellow Bow-line to the next level with its high performance and eco-conscious choice of raw materials.

A solid colored shirt with a subtle dobby structure combined with a soft collar and cuffs gives the shirt a smart & modern look. When you get the shirt in hand you will immediately recognize its more to it than catches the eye. The feather-light weight at first, silky soft hand-touch from Tencel™ as well, and the incredible stretch effect for your comfort, makes this shirt a master of performance. The shirt is also easy-care treated, so you can simply wash & wear it if you like.

679 KR



REGULAR



SLIM



WOMAN

SOFT MODERN CUT-AWAY COLLAR
WITH HIDDEN BUTTON DOWN

EASY CARE

STRETCH

FINE TWILL WEAVE, CHECK PATTERN

22% LONG STAPLE COMPACT COTTON,
51.5% LYOCCELL, 22.5% RECYCLED POLYAMIDE,
4% RECYCLED ELASTANE, 99 G/M²

SPLIT BACK YOKE

TALL, 4 MM-THICK BUTTONS

SOFT ROUND EDGE CUFF,
W. CUFFLINK HOLE

FLAT FRONT PLACKET

CURVED HEM

WRINKLE RESIST
4/6

STRETCH
4/6

WEIGHT
99 G/M²

EASY CARE

WATER ABSORB
+ QUICK DRY

DURABLE

GENTLE ON SKIN

RECYCLED
MATERIALS

STRETCH

YELLOW BOW 53



501 SKY BLUE CHECK

YELLOW BOW 53 REGULAR 2905301 ♂
YELLOW BOW 53 SLIM 2905302 ♂
YELLOW BOW 53 WOMAN 2905303 ♀

S-5XL
XS-XXL
XS-4XL

This shirt is taking the price conscious Yellow Bow-line to the next level with its high performance and eco-conscious choice of raw materials. A modern check- pattern at a fine twill weave combined with soft collar and cuffs gives the shirt a smart look. When you get the shirt in hand you will immediately recognize its more to it than catches the eye. The feather-light weight at first, silky soft hand-touch from lyocell as well, and the incredible stretch effect for your comfort, makes this shirt a master of performance. The shirt is also easy-care treated, so you can simply wash & wear it if you'd like.

679 KR



601 NAVYCHECK

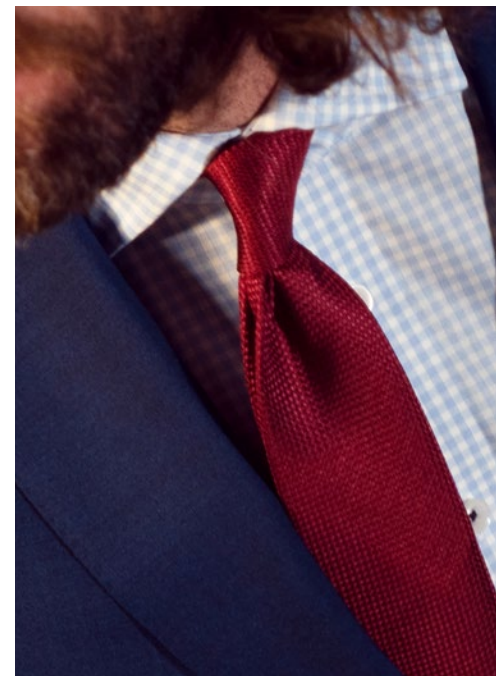
REGULAR



SLIM



WOMAN









BUTTON DOWN COLLAR

EASY CARE

STRETCH

SOLID COLORED OXFORD WEAVE

71% LONG STAPLE COTTON,
25% LYOCCELL, 4% ELASTANE. 160 G/M²

SPLIT BACK YOKE

BOX PLEAT AT BACK

PEARLWHITE BUTTONS

SOFT ROUND EDGE CUFF,
W. CUFFLINK HOLE

CHEST POCKET ON MENS STYLE

RAISED PLACKET

CURVED HEM


 WRINKLE RESIST
4/6


 STRETCH
5/6


 WEIGHT
160 G/M²

 EASY CARE


 DURABLE


 LONGLASTING WHITE


 STRETCH

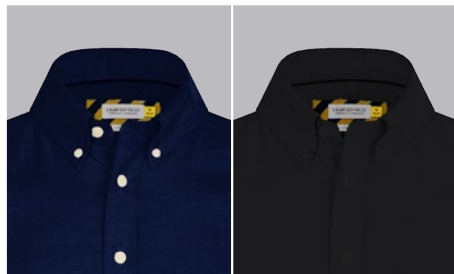

 LEISURE STYLE

YELLOW BOW 54



100 WHITE

500 SKY BLUE



600 NAVY

900 BLACK



YELLOW BOW 54 REGULAR 2905401 ♂
 YELLOW BOW 54 SLIM 2905402 ♂
 YELLOW BOW 54 WOMAN 2905403 ♀

S-5XL
 XS-XXL
 XS-4XL

This leisure Oxford shirt is a new version of our classic IB 30. It has the same classic look, but is new in many other ways. The fabric is a mix of long staple cotton, Lyocell & Elastane. This gives the shirt following performance.

Luxurious handfeel and outview from the lyocell and extreme stretch comfort from elastane. The shirt has also Easy Care performance so you simply wash, grab & go. Our Leisure models are 3cm shorter than our business models.

679 KR

REGULAR



SLIM



WOMAN



LEISURE STYLE MODELS ARE 3 CM SHORTER THAN OUR BUSINESS MODELS







WRINKLE RESIST
2/6

STRETCH
4/6

WEIGHT
280 G/M²

SUPERWASH

MERINO WOOL

MECHANICAL STRETCH

70% CERTIFIED MERINO WOOL,
30% LONG STAPLE PIMA COTTON

V-NECK COLLAR

RAGLAN SLEEVES

MACHINE WASHABLE

LESS PILLING

MERINO V

MERINO V 2930101
MERINO V WOMAN 2930103

S-4XL
XS-3XL

We mixed extra-fine Merino Wool/ Cotton yarn to get an all-season garment and benefits from 2 natural fibers. To keep up our responsible work as a brand, we use certified wool and carefully selected long staple U.S. Pima cotton. You can of course wash it in a washing machine. But keep in my mind – this is a Merino garment, it benefits of not being washed so often. Simply air it out when needed.

The yarn is a compact yarn with extra high twist. We added “super wash”-treatment, a technique in yarn production, for less pilling. In addition we made it with long staple U.S. Pima Cotton. This way we can make sure of high quality, soft touch and high performance. We aim for the best only. High quality & high performance.

899 KR

REGULAR



WOMAN



600 NAVY



900 BLACK



909 GREY MELANGE



910 LIGHT GREY MELANGE



WRINKLE RESIST
2/6

STRETCH
4/6

WEIGHT
280 G/M²



SUPERWASH



MERINO WOOL



MECHANICAL STRETCH



70% CERTIFIED MERINO WOOL,
30% LONG STAPLE PIMA COTTON

U-NECK COLLAR

RAGLAN SLEEVES

MACHINE WASHABLE

LESS PILLING

MERINO U

MERINO U 2930201

XS-4XL

We mixed extra-fine Merino Wool/ Cotton yarn to get an all-season garment and benefits from 2 natural fibers. To keep up our responsible work as a brand, we use certified wool and carefully selected long staple U.S. Pima cotton. You can wash it in a washing machine, but keep in mind, this is a Merino garment, and have benefits of not needing to be washed so often, simply air it out when needed.

The yarn is a compact yarn with extra high twist. We added "super wash"-treatment for less pilling. In addition we made it with long staple U.S. Pima Cotton. This way we can make sure of high quality, soft touch and high performance. We aim for the best only. High quality & high performance.

899 KR

REGULAR



600 NAVY



900 BLACK



909 GREY MELANGE



910 LIGHT GREY MELANGE







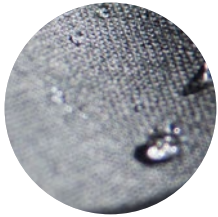
CLASSIC BLAZER 20



TURN UP CHEST POCKET
INTERIOR AS HANDKERCHIEF



ANTISTATIC FABRIC



WATER REPELLENT FINNISH



360 ° STRETCH



REGULAR



WOMAN



600 NAVY



650 NAVY MELANGE



900 BLACK



980 GREY



LIGHT WEIGHT



WATER REPELLENT



STRETCH

CLASSIC BLAZER 20 MAN 2962001 ♂
CLASSIC BLAZER 20 WOMAN 2962003 ♀

44-62
32-48

The water repellent high performance 4-way stretch blazer provides freedom to move in every moment. Gone are the days of stiff, uncomfortable dressing. Even let sudden changes in the weather roll right of your back with an innovative finish that actively repels water from your blazers surface. Lightweight soft rounded shoulders and light fusing together with AMF stitching at seams, gives the blazer a stylishly relaxed yet classy and formal look. Perfect for any occasion. Inside, the blazer is set up with soft viscose lining in elegant color combinations. In addition the sleeve lining is has been treated with an antibacterial finish, to help you prevent any unwanted odor during the hard working day.

86% WOOL, 8,5% POLYESTER + 5% LYCRA, 0,5% ANTISTATIC
HIGH PERFORMANCE 4-WAY STRETCH FABRIC.
BREATHABLE, LIGHTWEIGHT 260 GRAM
ENVIRONMENTAL FRIENDLY WATER REPELLENT FINNISH.
TURN UP CHEST POCKET INTERIOR AS HANDKERCHIEF
TWO-BUTTON CLOSURE.
DOUBLE VENTED BACK HEM FOR MAN BLAZER. (NO VENTS
FOR WOMAN BLAZER)
WELT POCKET AT CHEST AND 2 FLAP POCKETS AT WAIST.
SLEEVES WITH 4 KISSING BUTTONS.
REGULAR FIT (BETWEEN SLIM AND REGULAR) FOR BOTH
MAN & WOMAN
FULLY LINED. SOLID LINING IN BODY + PATTERNED LINING
IN SLEEVE.
4 INSIDE POCKETS.

2899 KR

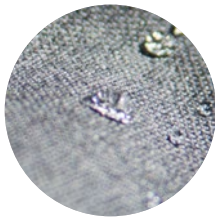
CLASSIC TROUSER



HOOK AND YKK ZIPPER



ANTISTATIC KNEE LINED



WATER REPELLENT FINNISH



360 ° STRETCH

REGULAR FIT
- STRAIGHT LEG - FLAT FRONT

600 NAVY



650 NAVY MELANGE



900 BLACK



980 GREY

CLASSIC TROUSER 2966121 ♂

44-62

These stylish flat front trousers in water repellent high performance 4-way stretch fabric provide freedom to move in every moment. It is as comfortable as it gets. Even let sudden changes in the weather roll right of with an innovative finish that actively repels water from your trousers surface. The press in trouser is carefully finished with the innovative and patented Supercree treatment. Which keeps the permanent press in the trouser. Soft inner waistband tailored from main fabric, allowing extra stretch for more comfortable movement. Knee lined, with soft viscose. Pair them with our classic blazer for a full suit, or solo with a crispy shirt for the smart, effortless office look.

1399 KR

89% WOOL, 6% POLYESTER, 5% LYCRA, 0,5% ANTISTATIC
KNEE LINED: 55% POLYESTER, 45% VISCOSE
HIGH PERFORMANCE 4-WAY STRETCH FABRIC, BREATHABLE,
LIGHTWEIGHT 260 GRAM,
ENVIRONMENTAL FRIENDLY WATER REPPPELENT FINISH.
REGULAR FIT.
STRAIGHT LEG.
FLAT FRONT.
WELT POCKET AT BACK, FRONT POCKET IN SIDE WITH AMF
STITCHING AT WAIST.
HOOK AND YKK ZIPPER IN FRONT WITH AMF STICING AT
COVER.



WATER REPELLENT



STRETCH

CLUB BLAZER 30



KISSING BUTTONS

TURN UP CHEST POCKET
INTERIOR AS HANDKERCHIEF

HALF LINED, BUTTERFLY STYLE

70% WOOL, 30 % POLYESTER
FREEFIT

MAN

WOMAN



209 BROWN MELANGE



600 NAVY



909 GREY MELANGE



STRETCH

CLUB BLAZER 30 MAN 2963001 ♂
CLUB BLAZER 30 WOMAN 2963003 ♀

44-62
32-48

Our modern stretch Club blazer is made with super soft shoulders, a tailored waist and half lined butterfly interior. It features generous a notch lapel, patch side pockets, welt chest pocket and double vents in back. The fabric construction has a fairly rough out-view for a less formal yet smart vibe. Wear it with your favorite denims or combine it with our classic trouser for a contemporary, formal look.

2999 KR

70% WOOL, 30 % POLYESTER FREEFIT

8 CM NOTCH LAPEL

TURN UP CHEST POCKET INTERIOR AS HANDKERCHIEF.

TWO-BUTTON CLOSURE.

NO VENTS ON WOMAN BLAZER.

WELT POCKET AT CHEST AND 2 PATCH POCKETS AT WAIST.

SLEEVES WITH 4 KISSING BUTTONS.

REGULAR FIT (BETWEEN SLIM AND REGULAR) FOR BOTH

MAN & WOMAN STYLES.

HALF LINED, BUTTERFLY STYLE. SOLID COLOR LINING IN

BODY + PATTERNED LINING IN SLEEVE.

3 INSIDE POCKETS.

BRIEFCASE



BRIEFCASE 2950100

This full leather briefcase is designed with multiple utility pockets and an adjustable leather shoulder strap. Our beloved J. Harvest & Frost logo are embossed in front. Distinguished features like open straps in side for newspaper or umbrella, and a removable organizer made of braided elastic bands for all your gadgets.

The inside is made with lining in grey felt, computer department, and a zip pocket at the side with contrast color felt as a nice colorful detail.

Two leather top handles and detachable Leather shoulder strap.
Leather proprietor tag. 41,5 x 29,5 x 9 cm

2499 KR

DOCUMENT FOLDER 2950200

Document folder with a stylish combination of leather and felt. Our beloved J. Harvest & Frost logo are embossed nicely in the leather in the front, between 2 leather straps. They are for the convenience open, so you can place your daily newspaper there when on the run.

Inside of documenter has lining in felt and multiple open pockets. It also shows some nice contrast color of royal blue felt behind pocket, to give the documenter the little extra twist.

Leather handle at top and grey felt at sides and internal.
Metal zipper with leather zip puller. 36 x 27 x 6 cm

1299 KR







TECHNICAL CITY COAT



REFLECTIVE VISIBILITY DETAILS



360° STRETCH



WATER PROOF YKK ZIPPERS



INSULATION- PRIMALOFT SILVER



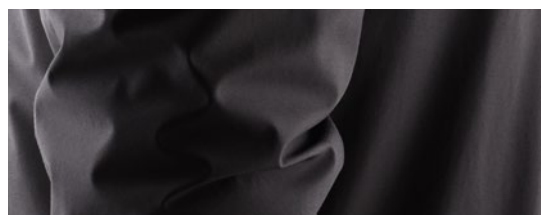
MAN



WOMAN



900 BLACK



LIGHT WEIGHT



WATER REPELLENT



360 °STRETCH

TECHNICAL CITY COAT 2990001 ♂
TECHNICAL CITY COAT WOMAN 2990003 ♀

S-3XL
XS-XXL

This is an exceptional light, comfortable and nice fitted ¾ length city-jacket. Suits any situation or weather condition, either it is on the way to a business meeting, or a late night stroll in the park. The main Technical features are 360 degree stretch, thin Primaloft-Silver insulation, water and wind proof. This highly technical, extreme lightweight car-coat is perfect for usage in the -5°C To +15°C temperature range.

3999 KR

EXCEPTIONAL LIGHTWEIGHT 600G.
OUTERSHELL - 87% POLYAMIDE- 13% ELASTANE.
360 DEGREE STRETCH
INSULATION- PRIMALOFT SILVER- 60 G.
10 000 MM. WATER PROOFED. (WP)
10 000 G. BREATHABILITY. (MVP)
DWR COATED WATER REPELLENCY.
TWO WAY YKK ZIPPER IN FRONT PLACKET.
WATER PROOF YKK ZIPPERS AT SIDES + CHEST POCKET.
REFLECTIVE VISIBILITY DETAILS AT FRONT AND BACK FOR SAFETY.
MAGNET LOCKING AT PLACKET, SPLIT & INSIDE POCKET.

TECHNICAL PARKA



REFLECTIVE VISIBILITY DETAILS



360° STRETCH



WATER PROOF YKK ZIPPERS



INSULATION- PRIMALOFT SILVER



MAN



WOMAN



900 BLACK



TECHNICAL PARKA 2990201 ♂
TECHNICAL PARKA WOMAN 2990203 ♀

S-3XL
XS-XXL

The popularity of our technical car coat, and the good test reports, made it necessary for us to make a hooded version. And so was the parka born. It has the same technical performances as the car-coat, but we made it with a bit more bold attitude of a "big city-parka". Outside front pockets, long sloping tail in the back and more straight fit. The way you would want to wear it, providing you with the right feeling of style, luxury and versatility in any given day or occasion.

The main Technical features are 360 degree stretch, thin Primaloft-Silver insulation, water and wind proof. This highly technical, extreme lightweight parka is perfect for usage in the -15°C To +15°C temperature range.

4499 KR

EXCEPTIONAL LIGHTWEIGHT 800G.
OUTERSHELL - 87% POLYAMIDE- 13% ELASTANE.
360 DEGREE STRETCH
INSULATION- PRIMALOFT SILVER- 80 G.
10 000 MM. WATER PROOFED.
10 000 G. BREATHABILITY.
DWR COATED WATER REPELLENCY.
TWO WAY YKK ZIPPER IN FRONT PLACKET.
WATER PROOF YKK ZIPPERS AT CHEST POCKET.
4 OUTSIDE POCKETS.
2 BIG OUTSIDE POCKETS IN FRONT WITH FLAP COVER
AND MAGNET LOCKING AND TWO ZIPPED POCKETS
AT CHEST.
REFLECTIVE VISIBILITY DETAILS AT FRONT, BACK AND
HOOD FOR SAFETY.
MAGNET LOCKING AT PLACKET AND SIDE POCKETS.



LIGHT WEIGHT



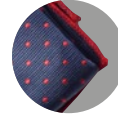
WATER REPELLENT



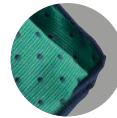
360 °STRETCH



301 RED/WHITE



604 NAVY/RED



706 GREEN/NAVY



806 PURPLE/NAVY



901 BLACK/WHITE

HANDKERCHIEF 2920000

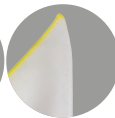
Complete the look with our fabulous ties and handkerchiefs. We use high tech microfibers in these hankies. Easy to clean, hard to wrinkle and with a natural silk-looking sheen.

100% microfiber/polyester One Size

79 KR



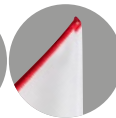
100 WHITE



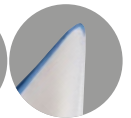
102 YELLOW



103 ORANGE



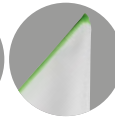
104 RED



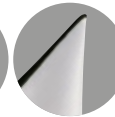
105 LIGHT BLUE



106 NAVY



107 GREEN



109 BLACK/
WHITE



115 BLUE



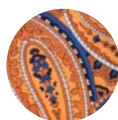
118 PURPLE

THE WHITE HANDKERCHIEF 2920100

We made this clean white hanky's in a big variety of edge-colors. Feel free to match it up with our classic double knot cufflinks to suit your occasion with style.

100% microfiber/polyester One Size

69 KR



388 ORANGE



488 PINK



588 BLUE



788 GREEN



888 PURPLE



988 GREY

THE PAISLEY HANDKERCHIEF 2920300

This handsome pocket squares features a bold paisley pattern with rich colors.

100% silk One Size

159 KR



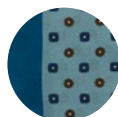
210 BROWN



710 GREEN



490 WINE



510 SKY BLUE



610 NAVY

HANDKERCHIEF SILK FLORAL 2920400

Classic silk handkerchief with floral patterns.

100% Silk One Size

159 KR





303 ORANGE

490 WINE

500 LIGHT BLUE

600 NAVY



700 GREEN

900 BLACK

980 GREY

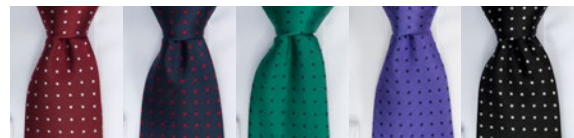
250 BROWN

TIE SILK OXFORD 2910300

Monotone silk tie with oxford weave structure.

100% Silk One Size

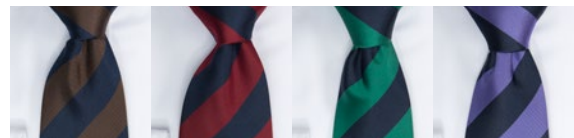
269 KR

301 RED/
WHITE604 NAVY/
RED706 GREEN/
NAVY806 NAVY/
PURPLE901 BLACK/
WHITE**TIE DOTTED 2910100**

Complete the look with our fabulous ties and handkerchiefs. We use high tech microfibers in the ties because, well you know... You might spill that soup. Microfibers doesn't absorb. A quick rinse and voilà. Clean and as good as new.

100% microfiber One Size

129 KR



602 NAVY/BROWN

603 NAVY / WINE

607 NAVY/GREEN

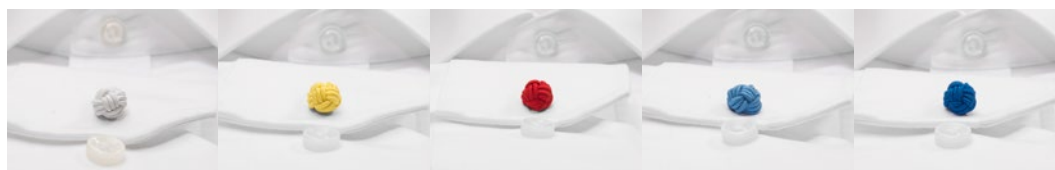
608 NAVY/PURPLE

TIE STRIPED 2910200

Complete the look with our fabulous regimental striped ties. We use high tech microfibers in these ties because, well you know... You might spill that soup. Micro fibers doesn't absorb. A quick rinse and voilà. Clean and as good as new.

100% microfiber One Size

129 KR



100 WHITE

216 YELLOW

400 RED

500 SKY BLUE

532 BLUE



600 NAVY

727 GREEN

800 PURPLE

810 LIGHT PURPLE

900 BLACK

CUFFLINKS 2940000

All of our shirts come with an extra buttonhole in the cuff, so if you prefer you can wear a set of our classic double knot on bar cufflinks. Their hand-made from soft stretch band, and comes in a big variety of colors.

Soft stretchband 10 x 10 mm

49 KR



600 NAVY



900 BLACK



980 GREY

SOCKS 2970104

These cotton socks have elastic knitting at the ankle and arch for a perfect fit all day.

80% Organic Cotton,
15% polyamid, 5% lycra 40-42, 43-45

99 KR



INDEX

BLACK BOW 60	7	PURPLE BOW 144	29
BRIEFCASE	67	PURPLE BOW 145	31
CLASSIC BLAZER 20	64	PURPLE BOW 146	33
CLASSIC TROUSER	65	RED BOW 20	13
CLUB BLAZER 30	66	RED BOW 24	14
CUFFLINKS	75	RED BOW 29	15
DOCUMENT FOLDER	67	RED BOW 120	17
GREEN BOW 01	11	RED BOW 121	19
HANDKERCHIEF	72	RED BOW 122	21
HANDKERCHIEF SILK FLORAL	73	SOCKS	75
INDIGO BOW 30	34	TECHNICAL CITY COAT	70
INDIGO BOW 32	35	TECHNICAL PARKA	71
INDIGO BOW 33	37	THE PAISLEY HANDKERCHIEF	73
INDIGO BOW 34	39	THE WHITE HANDKERCHIEF	72
INDIGO BOW 37	41	TIE DOTTED	74
INDIGO BOW 130	43	TIE SILK OXFORD	74
INDIGO BOW 131	44	TIE STRIPED	74
MERINO U	60	YELLOW BOW 50	46
MERINO V	58	YELLOW BOW 50 S/S	46
PURPLE BOW 48	23	YELLOW BOW 51	49
PURPLE BOW 49	25	YELLOW BOW 52	50
PURPLE BOW 141	26	YELLOW BOW 53	51
PURPLE BOW 142	27	YELLOW BOW 54	55
PURPLE BOW 143	28		



